

Miniature Current Transformers

Primary Single-Turn (LB1) Series

The series of LB1 Miniature current transformers are designed specifically for integration into products which require exceptionally accurate primary signal transformation while exposed to harsh environmental operating conditions. An internal precision resistor across the secondary winding of the CT provides a low safe voltage output. It can save time and the installation costs.

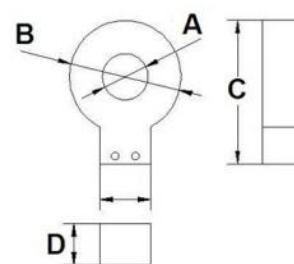
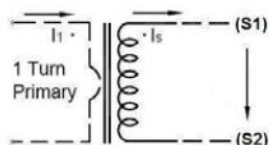
◆ Features

- Primary Single-Turn
- Wide inner window, allowing clamping of big cables or bus-bars
- Wide range of sizes to accommodate all the existing installations

◆ Applications

- Current measurement, monitoring and protection for electrical wiring and equipment.
- Instrumentation, Current and power measurement for electric motors, lighting, air compressor, heating and ventilation system, air-condition equipment and automation – control system.
- Current, power and energy monitoring device.
- Relay protection device.

◆ Circuit connection diagram



◆ Technique Index

| Electrical Parameter | |
|-----------------------|-------------------|
| Frequency | 50-400Hz |
| Rated Input | 0-250A |
| Measuring range | 5%In-120%In |
| Rated Output | 0-100mA |
| Ratio | $\leq \pm 0.1\%$ |
| Phase angle | $\leq \pm 5$ 分 |
| Dielectric strength | 2.5KV/1mA/1min |
| Insulation Resistance | DC500V/1000MΩ min |

| Mechanical Parameter | |
|----------------------|------------------------------|
| Case | PBT /UL94-V0 |
| Bobbin | PBT |
| Core | Permalloy or Nanocrystalline |
| Internal structure | Epoxy |
| Construction | ----- |
| Operating Temp | -25℃~+75℃ |
| Operating Humidity | $\leq 85\%$ |
| Output Connection | Leads |

Miniature Current Transformers

Primary Single-Turn (LB1) Series

◆ Type Selection

| Mfg P/N | Rated Input (A) | Ratio | Burden (Ω) | Accuracy | Dimensions (mm/inch) | | | |
|------------|--------------------|--|------------------------|----------|----------------------|----------------|----------------|---------------|
| | | | | | A | B | C | D |
| LB1-1071 | 10A | 1000: 1 2000: 1 2500: 1 3000: 1 | ≤ 50 | 0.1、0.2 | 6.99 .275 | 17.23 .678 | 22.0 .866 | 8.10 .318 |
| LB1-1091 | 20A | | ≤ 100 | 0.1、0.2 | 9.0 .35 | 22.0 .87 | 27.8 1.09 | 8.4 .33 |
| LB1-1151 | 50A | | ≤ 100 | 0.1、0.2 | 15.0 .59 | 30.1 1.18 | 36.0 1.41 | 9.2 .36 |
| LB1-1072 | 50A | | ≤ 200 | 0.1、0.2 | 7.11 .280 | 23.20 .913 | 28.95 1.397 | 11.05 .435 |
| LB1-1092 | 75A | | ≤ 200 | 0.1、0.2 | 9.14 .354 | 26.0 1.02 | 31.8 1.25 | 17.0 .670 |
| LB1-1131 | 200A | | ≤ 200 | 0.1、0.2 | 13.08 .515 | 37.83 1.489 | 43.18 1.70 | 14.0 .551 |
| LB1-1191 | 250A | | ≤ 200 | 0.1、0.2 | 19.0 .748 | 47.6 1.874 | 60.0 2.360 | 17.6 .692 |

Xiamen ZT Technology Co., Limited

Skype: zntarjason,

zntarjason@gmail.com,

sales@zntar.com

www.zntar.com